

WALKS around PORTOBELLO

Description: A stroll to and around a beautiful park and haven for wildlife, passing two other parks on the way.

Length: Just over one mile each way from the Town Hall to the far end of Figgate park.

Time: As long as you can spare, especially on a sunny day!

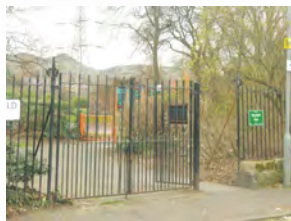
Terrain: Standard town footpaths.



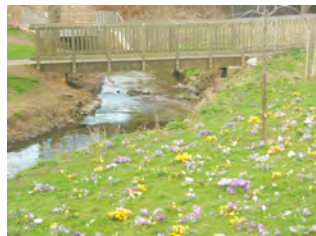
With your back to the Town Hall, turn left and walk along to the first street on your left – Rosefield Avenue. Turn left and walk along to the end of this street.



The entrance to Rosefield Park is facing you. This is usually a very tranquil park, especially down by the Figgate Burn; take a stroll around!



This sundial used to stand in the grounds of Portobello's oldest surviving building, the seafront Tower. This park hosts a market on the first Saturday of most months.



Perfect tranquility



A short detour here would bring you to Portobello Golf Course, Edinburgh's first municipal course.

From Brighton Park walk along Brighton Place through the tunnel, cross straight over at the traffic-lit junction, and turn right into Hamilton Terrace. Walk right along to the end of the street, and one of the entrances to Figgate Park – the "Figgy Park" – is facing you.



One of the entrances to Figgate Park





Figgate Park has won a Green Flag award – the highest accolade for public parks in recognition of their welcoming and healthy ambience, sustainability, heritage, community involvement and management.



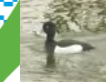
A Pictorial Meadow at the North end of the Park provides continuous and evolving displays of colour from Midsummer through into Autumn. Species here include Fairy Toadflax, Tickseed, Cornflower and Purple Tansy.



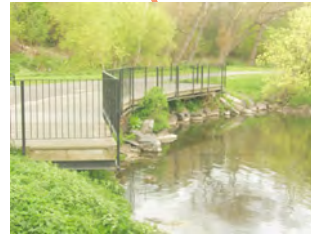
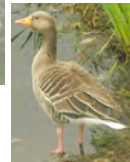
The viewing arena



Perfect for Pooh Sticks!



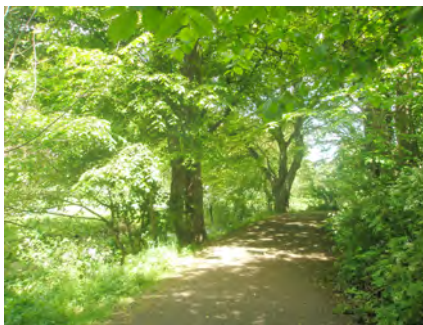
The Loch is a superb sanctuary for both resident and migrating birds.



The Loch is a superb sanctuary for both resident and migrating birds.



Information Boards tell visitors about the wildlife to watch out for, and forthcoming events.



Friends of Figgate Park is a group of local people promoting the health and wellbeing of residents, encouraging environmental improvement and practical conservation. Membership is open to anyone who is interested in the Park. There is news and information at <http://www.figgatepark.org.uk/>

There is a weekly 5k 'fun run'; see <http://www.parkrun.org.uk/portobello/>



PORTOBELLO COMMUNITY COUNCIL

